



EUROPEAN CAMPUS  
ROTTAL - INN

DEGGENDORF  
INSTITUTE OF  
TECHNOLOGY **DIIT**

THE EUROPEAN CAMPUS

# STUDENT SURVIVAL GUIDE

2021

“Hey Liesl,

BRING ONE MORE,  
IT'S SUCH A  
GOOD LAGER!”



*Original Bavarian lager beer*

*Once Liesl,  
always Liesl!*



*Enjoy authentic  
Bavarian tradition  
and brewing  
artistry*



MIT NATUR-  
HOPFEN

[www.mooserliesl.de](http://www.mooserliesl.de)

## WELCOME 4

---

Welcome from President Prof. Dr. rer. nat. Peter Sperber	4
Welcome from Prof. Dr. Horst Kunhardt	5
Welcome from the Student Representation	6
Freshers' day Schedule	8
Campus Location and Layout	9

## FACULTY & COURSE CONTACTS 14

---

European Campus Faculty Contacts	17
Bachelor Degree Courses	18
Master Degree Courses	26

## SERVICE CENTRES 34

---

Centre for Studies	36
Languages and Electives	38
Career Service	40
International Career Service	42
Academic Counselling	44
Student Counselling	46
International Office	47
International THD-Alumni	48
Family Affaris	50
Library	52
IT Services	54
E-Learning	58
Virtuelle Hochschule Bayern	59
Quality Management	60
Studentenwerk (Student Union) Councelling	62
BaFöG Student Grants	64
Practical Information - Liability Insurance	65
Student Representation	66

## STUDENT LIFESTYLE 68

---

Sports	70
RESP e.V.	71
No means No - Sexual Harassment	72
Host Family Program	75
ECRI Band	76
Certificate in Intercultural Competence	77
Getting Around	78
Doctors in Pfarrkirchen	80
Municipality of Pfarrkirchen	82

# WELCOME

---

## DEAR FIRST YEAR STUDENTS,

The pandemic has changed so many things, including studying. The last three semesters of teaching at universities in Germany was almost exclusively digital. That worked out quite well but of course, studying is much more than just attending a virtual or analogue lecture. Studying means talking, networking, exchanging ideas, meeting new people then taking on and overcoming challenges together, as well as having fun with new friends, celebrating, partying, seeing other places, gathering unexpected impressions, being inspired. All this is not possible on a laptop at home in the digital workplace. We are filled with hope that we have survived the worst and can start the coming winter semester 2021/22 with some normality again. Your first semester, the semester in which you will all hopefully begin successful studies at the Deggendorf University of Applied Sciences.



I am very pleased that you have chosen the Deggendorf Institute of Technology. We have mastered digital teaching, but above all, we believe in the other aspects of university life. That's us, that's the DIT and our environment: we are innovative and vibrant. You are now a part of it. Welcome to your university.

The DIT is considered an excellent place to study. Why is that? Well, for example, we have a total of 100 nations on our three teaching campuses with almost 30 percent of our students being international. Our university network includes 190+ universities in 60 countries. So if you want to make international contacts for life, DIT is the right place for you. Additionally, we have almost 500 small, medium-sized and large companies as external partners. That means we benefit from a perfect interchange of knowledge and technology expertise to and from business and industry as well as excellent connections to the job market. As a graduate, the fate of the world will be in your hands as your academic and practical experience will be in professional demand.

I wish you a success in your studies, with as much "on campus" learning as possible. You will meet many cleverminds and helping hands here, we are always there for you and happy to support you on your way. The Survival Guide is just the beginning. Get actively involved in shaping our campus, for example in one of our student clubs, and above all, have lots of fun during your time studying at the European Campus Rottal-Inn.

## PROF. DR. RER. NAT. PETER SPERBER

President, Deggendorf Institute of Technology



## DEAR STUDENTS AT THE EUROPEAN CAMPUS ROTTAL-INN,

You will start your studies at the European Campus Rottal-Inn of the Deggendorf Institute of Technology in the winter semester 2021/2022. I would like to welcome you very warmly and wish you a good start to your studies!

The European Campus is the location of the Deggendorf Institute of Technology, which is internationally oriented and has three major study fields:

- international healthcare industry
- international tourism industry
- international engineering industry.

For the winter semester, the Bachelor's program in International Tourism Management / Health and Medical Tourism begins for the seventh time, a course that combines two megatrends, tourism and health. The Medical Informatics Master's degree course, the seventh time, will also be launched, focusing on the application of computer science in medicine, such as eHealth, telemedicine and international health management. For the fourth time we can launch the Bachelor Health Informatics. All our study programs are successfully accredited by international accreditation organizations.

For the sixth time, the bachelor's degree course in Industrial Engineering is launched. We are proud to start with a new Bachelor Study Program for the first time, the Bachelor Energy Systems Engineering. Further courses of study from the international health care industry as well as international engineering will be built up in the coming years, so that this winter semester 250 new students will begin their studies. Our students come from 80 nations. 1,000 students will study at the European Campus.

It fills us with pride that we can start for the third time the Master Healthy and Sustainable Buildings that deals with the future of sustainable buildings and healthy living.

We are working on new study programs in the field of public and global health and building products and processes. The development and expansion of the study programs will also include a new building with additional lecture and laboratory rooms. We will also strengthen our efforts in the area of new professorships and staff positions. The signs for the European Campus are therefore looking good! With your decision to study internationally, you are making a decisive contribution to the development of the European Campus. My sincere thanks for that!

I wish you all the best for your studies and a pleasant time in Pfarrkirchen and in the Rottal-Inn region!

**PROF. DR. HORST KUNHARDT**

Vice President, Deggendorf Institute of Technology

Head of European Campus Rottal-Inn

# WELCOME

---

DEAR FRESHERS,

We would like to welcome you at the European Campus Rottal-Inn.

We, the student representation, an elected council that represents your interests and acts on behalf of all students, would like to wish you a successful start to your studies!

To give you the best start, we are organising today's Freshers' Day which will give you the opportunity to meet your fellow students and gain a first insight into student life. We will try to make sure that you have a great time and settle in, despite the many COV-ID regulations during this difficult pandemic era.

We are also responsible for other unforgettable events, such as the Christmas party. If you too would like to be involved in university organisation including event planning or getting to know professors better, then joining a club is just the right thing to do. On Freshers' Day, you will see different booths from student clubs and associations, so be sure to stop by and see which opportunities attract you.

Finally, we hope that you that you enjoy your studies, even if you sometimes reach your own limits. Your time as a student can be the best time of your life! If you have any questions or if you want to know more about us - please send us an email ([studentenvertretung@th-deg.de](mailto:studentenvertretung@th-deg.de)) or follow us on Facebook and Instagram.

SVEN KUFNER

Chairman of the Student Representation





sparkasse-rottal-inn.de

# Welcome to Pfarrkirchen.

We wish you a pleasant time  
in Bavaria.

Sparkasse Rottal-Inn.  
Your local bank.

 Sparkasse  
Rottal-Inn

**SCHLAGMANN**  
**POROTON®**

*Die Füllung macht  
den Unterschied!*



Nicht nur bei Ziegeln.

**POROTON®. Die Ziegel mit der intelligenten  
Perlit-Füllung. Für Wärmedämmung und  
Wohngesundheit.**

www.schlagmann.de



## FRESHERS' DAY SCHEDULE: MONDAY 4<sup>TH</sup> OCTOBER 2021

9.30 - 9.45am  
EC 1.07 - 1.10

### **Welcome speeches**

- Prof. Dr. Horst Kunhardt, Head of European Campus Rottal-Inn
- Prof. Dr. Georg Christian Steckenbauer, Dean

9.45 - 10am  
EC 1.07 - 1.10

### **Introduction to the service facilities**

- (Language & Elective Centre, Career Service, International Office, Study Centre...)
- Franziska Durner, Career Service & Student and Academic Counselling
  - Daniela Schwertlinger, International Office
  - Birgit Espertshuber, Study Centre

10 - 10.10am  
EC 1.07 - 1.10

### **Information regarding course organization**

- Verena Hager, Course Assistant ESE, IE
- Brigitte Hiefinger, Course Assistant HI, DH, GPH
- Verena Sedlatschek, Course Assistant ITM

10.10 - 10.15am  
EC 1.07 - 1.10

### **Support in learning and self-management**

- Claudia Nikitsin, Academic Staff Member

10.15 - 10.30am  
EC 1.07 - 1.10

### **Introduction to the student club "RESP e. V."**

- Short information about RESP

10.30 - 11am

### **Campus tour**

- RESP e.V.

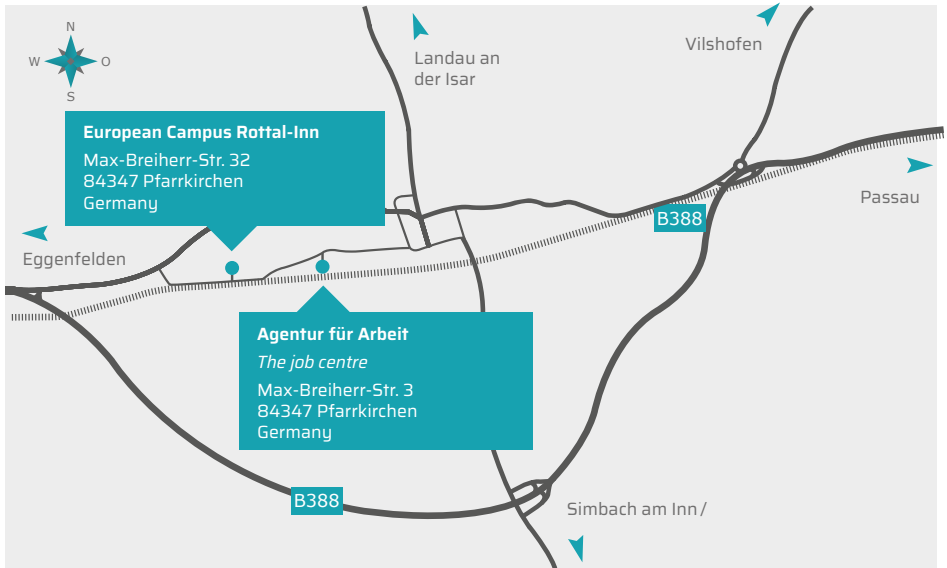
Programme is subject to change. Changes can be announced at short notice per mail or on the website.

We wish all new fellow students a good start! Your student representation ([www.studentischer-konvent.de](http://www.studentischer-konvent.de))





## CAMPUS LOCATION & LAYOUT



Find out more about the town and the local environment on our website:

[www.th-deg.de/en/dit/campuses/ecri](http://www.th-deg.de/en/dit/campuses/ecri)

TECHNISCHE  
HOCHSCHULE  
DEGGENDORF

TECHNISCHE  
HOCHSCHULE  
DEGGENDORF

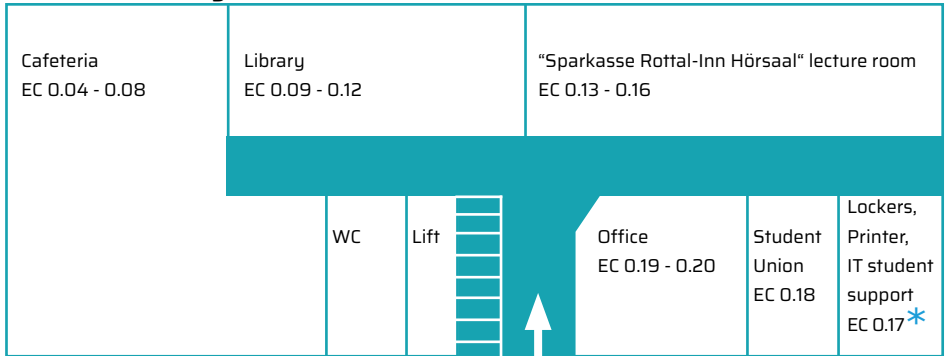
### SPECIAL DISCOUNT

Receive a 10% discount on our fantastic merchandise products in the first two weeks of the new semester.

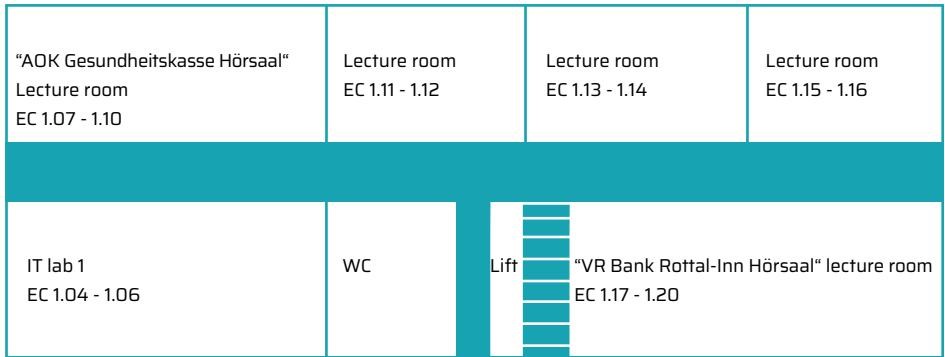
Order now at [www.thd-shop.de](http://www.thd-shop.de)!

[www.thd-shop.de](http://www.thd-shop.de)

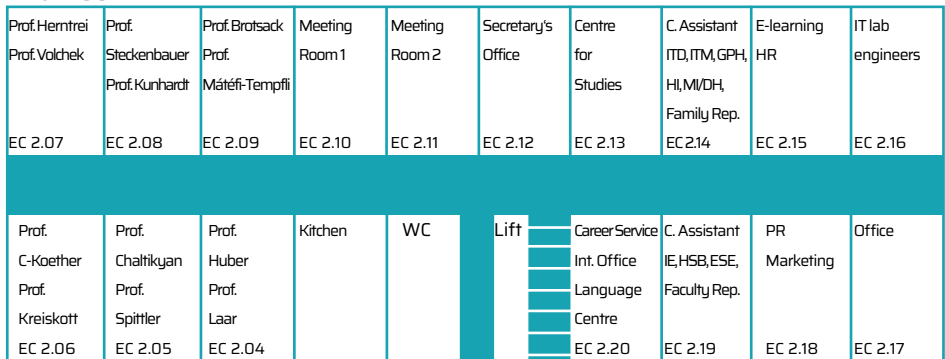
## MAIN BUILDING ground floor



## 1st floor

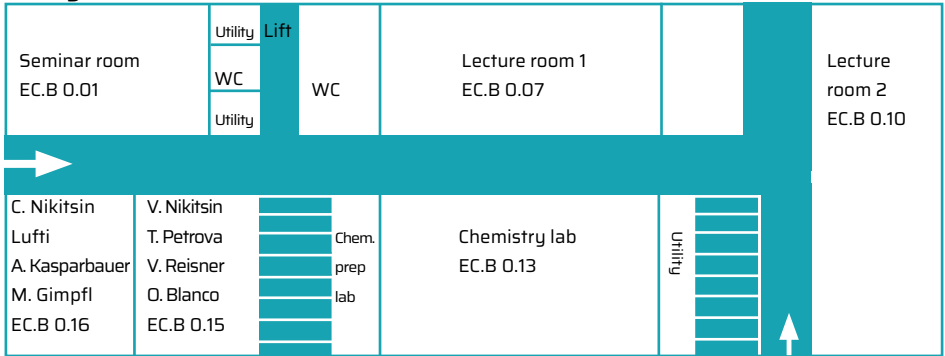


## 2nd floor

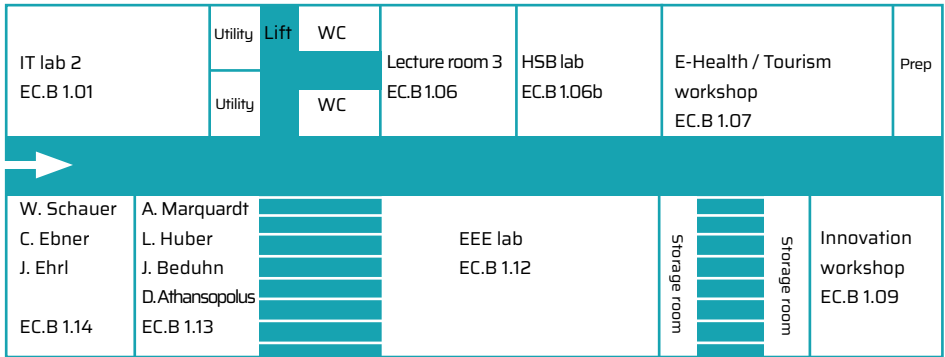


\* If you need IT support, please go to office EC 0.17

## SILC ground floor



## SILC 1st floor





**DeinHaus 4.0**  
LÄNGER LEBEN ZUHAUSE  
NIEDERBAYERN

TECHNISCHE  
HOCHSCHULE  
DEGGENDORF **THD**

## DeinHaus 4.0 - Länger Leben Zuhause

Das Forschungsprojekt sucht studentische Hilfskräfte

- Digitale Technik für ein intelligentes (Pflege-)Wohnumfeld
- Individuelle Unterstützung im Alltag
- Erhalt von Selbstbestimmung, Eigenständigkeit und Sicherheit
- Entlastung pflegender Angehöriger

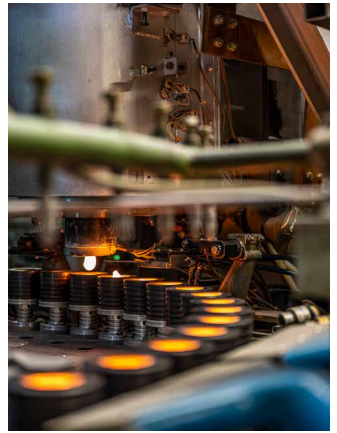
Besucht unsere Mustereinrichtungen und erlebt dort praktische Beispiele digitaler Assistenz-Technik!

Außerdem sind wir auf der Suche nach studentischen Hilfskräften, die ein Teil unseres Teams werden und uns in der Forschung unterstützen möchten - wir freuen uns auf Dich!

Für weitere Informationen, bei Fragen oder Anliegen:

Web: **[www.deinhaus4-0.de](http://www.deinhaus4-0.de)**  
Mail: **[deinhaus4.0@th-deg.de](mailto:deinhaus4.0@th-deg.de)**  
Tel.: **0991 3615 615**





# Wir wünschen allen Erstsemestern viel Erfolg für das kommende Studium!

**Dein zukünftiger Einstieg bei uns!**

## **Studiengänge:**

- Elektro- und Informationstechnik
- Maschinenbau
- Mechatronik
- Wirtschaftsingenieurwesen
- Wirtschaftsinformatik
- Wirtschaftspsychologie
- Umweltingenieurwesen
- Betriebswirtschaftslehre

## **Join the Club!**

- Praktika
- Bachelorarbeiten
- Masterarbeiten
- Werkstudententätigkeiten
- Ferienjobs

## **Wir freuen uns auch auf Deine Initiativbewerbung!**

Bitte lass uns Deine Bewerbung über unser Jobportal unter [www.zwiesel-glas.com/karriere](http://www.zwiesel-glas.com/karriere) zukommen.

Gerne steht Dir Rebecca Simmet auch per E-Mail unter [karriere@zwiesel-kristallglas.com](mailto:karriere@zwiesel-kristallglas.com) für weitere Informationen zur Verfügung.





## FACULTY & COURSE CONTACTS

WE ARE AN INTERNATIONAL CAMPUS AND FACULTY OF THE DEGGENDORF INSTITUTE OF TECHNOLOGY, WHERE ALL COURSES ARE TAUGHT IN ENGLISH

Bachelor degree courses:

- Energy Systems Engineering
- Health Informatics
- Industrial Engineering
- International Tourism Management / Health and Medical Tourism

Master degree courses:

- Digital Health (Medical Informatics)
- Global Public Health
- Healthy and Sustainable Buildings
- International Tourism Development



# EUROPEAN CAMPUS FACULTY CONTACTS





# EUROPEAN CAMPUS ROTTAL-INN - TEACHING CAMPUS & FACULTY

Your link to the most recent updates and essential information:  
<https://ilearn.th-deg.de/course/view.php?id=9340&lang=en>  
More contacts: [www.th-deg.de/en/dit/organisation/faculty-ecri](http://www.th-deg.de/en/dit/organisation/faculty-ecri)

## WHO'S WHO IN THE FACULTY



### DEAN

Prof. Dr. Georg Christian  
Steckenbauer, MSc.  
0991 3615-8844  
[georg.steckenbauer@th-deg.de](mailto:georg.steckenbauer@th-deg.de)  
EC 2.08



### VICE DEAN

Prof. Dr.-Ing. Thomas Spittler  
0991 3615-8859  
[thomas.spittler@th-deg.de](mailto:thomas.spittler@th-deg.de)  
EC 2.05



### DEAN OF STUDIES

Prof. Dr. Sascha Kreiskott  
0991 3615-8851  
[sascha.kreiskott@th-deg.de](mailto:sascha.kreiskott@th-deg.de)  
EC 2.06



### CHAIR OF EXAM BOARD

Prof. Dr. Marcus Herntrei  
0991 3615-8842  
[marcus.herntrei@th-deg.de](mailto:marcus.herntrei@th-deg.de)  
EC 2.07



### FACULTY REPRESENTATIVE

Claudia Hageneder  
0991 3615-8855  
[claudia.hageneder@th-deg.de](mailto:claudia.hageneder@th-deg.de)  
EC 2.19



### WOMEN'S REPRESENTATIVE

Prof. Dr. Michelle Cummings- Koether  
0991 3615-8865  
[michelle.cummings-koether@th-deg.de](mailto:michelle.cummings-koether@th-deg.de)  
EC 2.06



### SECRETARY

Lisa Huber  
0991 3615-8825  
[lisa.huber@th-deg.de](mailto:lisa.huber@th-deg.de)  
EC 2.12



### SECRETARY

Elisabeth Müller  
0991 3615-8871  
[elisabeth.mueller@th-deg.de](mailto:elisabeth.mueller@th-deg.de)  
EC 2.12



### SECRETARY

Valentin Bauer  
0991 3615-8886  
[valentin.bauer@th-deg.de](mailto:valentin.bauer@th-deg.de)  
EC 2.12



# ENERGY SYSTEMS ENGINEERING - SHAPE THE POWER INDUSTRY OF THE FUTURE!

In modern day life, unlimited access to a power supply at any time and in almost any place is expected. However, the future of this supply lies in renewable energies such as wind power, geothermal energy or solar energy.

As a student of Energy Systems Engineering, you will be trained as an Engineer with the skills to convert power supplies from fossil fuels to renewable

sources of energy, involved in a range of areas such as power generation, conversion, transport, usage and storage.

You will learn through practical and theoretical instruction to explore the technical and economic aspects of current energy systems, to gain in-depth cross-sectional expertise in the supply, integration and storage of future energy systems.

## COURSE CONTACTS



### COURSE COORDINATOR

Prof. Dr. Mátéfi-Tempfli  
0991 3615-8833  
stefan.matefi-tempfli@th-deg.de  
EC 2.09



### COURSE ASSISTANT

Verena Hager  
0991 3615-8870  
verena.hager@th-deg.de  
EC 2.19



### INTERNSHIP COORDINATOR

Prof. Dr. Sascha Kreiskott  
0991 3615-8851  
sascha.kreiskott@th-deg.de  
EC 2.06



### CENTRE FOR STUDIES EXAM ADMINISTRATOR

Tamara Kroll  
0991 3615-8818  
tamara.kroll@th-deg.de  
EC 2.13

Your link to current and essential information:  
<https://ilearn.th-deg.de/course/view.php?id=9340&lang=en>



**BACHELOR**

**HEALTH INFORMATICS**



# HEALTH INFORMATICS - SUPPORT THE MEDICINE OF THE FUTURE!

This degree course teaches you to become a computer scientist in the health industry, as informatics-based, medical, scientific and technical knowledge in healthcare and the healthcare industry are influential in management positions.

Within the first four semesters, the focus is to learn programming languages, then you will develop the

skills to design, configure and operate information systems, compliant with the applicable rules and regulations.

The integrated internship semester which takes place in selected healthcare institutions, organisations and businesses in close coordination with DIT will help you practise your skills to achieve your career goal.

## COURSE CONTACTS



### INTERNATIONAL AND COURSE COORDINATOR

Prof. Dr.-Ing. Thomas Spittler  
0991 3615-8859  
thomas.spittler@th-deg.de  
EC 2.05



### COURSE ASSISTANT

Brigitte Hiefinger  
0991 3615-8845  
brigitte.hiefinger@th-deg.de  
EC 2.14



### INTERNSHIP COORDINATOR

Prof. Dr. Dominik Böehler  
0991 3615-8874  
dominik.boehler@th-deg.de  
AA 221



### CENTRE FOR STUDIES EXAM ADMINISTRATOR

Monika Hellbauer  
0991 3615-8887  
monika.hellbauer@th-deg.de  
EC 2.13



**BACHELOR**

**INDUSTRIAL ENGINEERING**

# INDUSTRIAL ENGINEERING - BE IMMERSED IN THE WORLD OF ENGINEERING & MANAGEMENT!

Through practice-oriented instruction, students gain in-depth cross-sectional expertise in complex areas of engineering and business administration.

Students are taught subject-specific, methodological and social skills, enabling them as graduates to independently apply their academic perception and knowledge in all situations, acting responsibly as an employee or as an entrepreneur. Acquisition

of international skills helps graduates to launch their careers in complex and intercultural business environments, especially in energy and resource industries.

In the context of increasing economic globalization, the ability to work efficiently in multicultural environments equipped with appropriate language skills is of particular importance.

## COURSE CONTACTS



### COURSE COORDINATOR

Prof. Dr. Raimund Brotsack  
0991 3615-491  
raimund.brotsack@th-deg.de  
EC 2.09



### COURSE ASSISTANT

Verena Hager  
0991 3615-8870  
verena.hager@th-deg.de  
EC 2.19



### INTERNSHIP COORDINATOR

Prof. Dr. Sascha Kreiskott  
0991 3615-8851  
sascha.kreiskott@th-deg.de  
EC 2.06



### CENTRE FOR STUDIES EXAM ADMINISTRATOR

Tamara Kroll  
0991 3615-8818  
tamara.kroll@th-deg.de  
EC 2.13



**BACHELOR**

**INTERNATIONAL TOURISM MANAGEMENT/  
HEALTH AND MEDICAL TOURISM**



## INTERNATIONAL TOURISM MANAGEMENT - BE A LEADER IN THE HEALTH & TOURISM SECTOR!

This degree focuses on a diverse qualification which will enable you to launch your career in a wide variety of areas throughout the health and tourism sector.

You will be able to efficiently manage a leadership pole, implement projects, or take over the management of a small company in the health and tourism industry.

The practical section of the course will prepare you

for your future, as you will complete an internship in a selected national and international organization that works in close coordination with DIT.

Expertise is gained in current issues of health and medical tourism through the programme's focus on diverse areas of application. The flexible course structure allows you to develop field-oriented skills early in your studies.

### COURSE CONTACTS



#### INTERNATIONAL, COURSE & INTERNSHIP COORDINATOR

Prof. Dr. Marcus Herntrei  
0991 3615-8842  
marcus.herntrei@th-deg.de  
EC 2.07



#### COURSE ASSISTANT

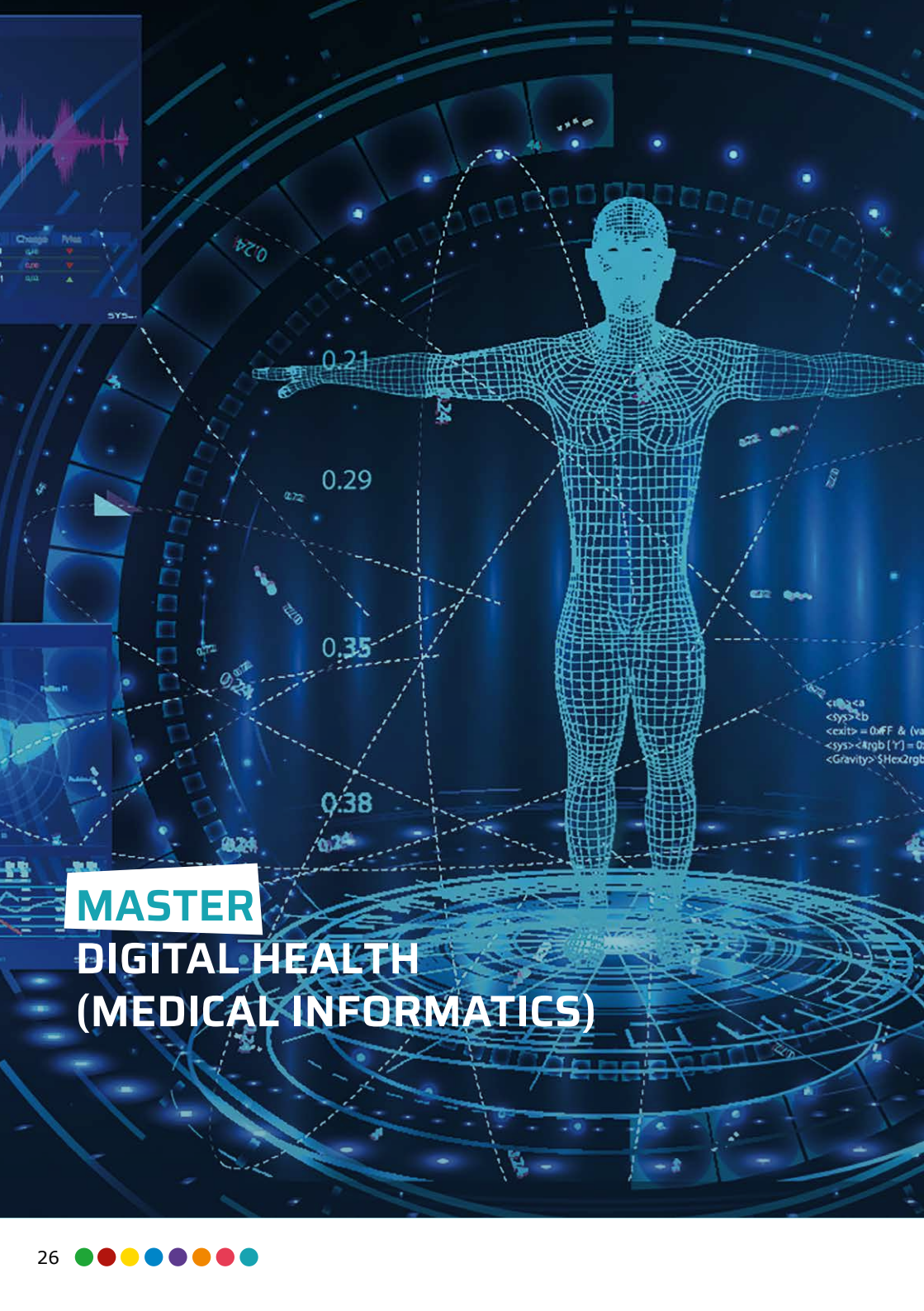
Verena Sedlatschek  
0991 3615-8812  
verena.sedlatschek@th-deg.de  
EC 2.14



#### CENTRE FOR STUDIES EXAM ADMINISTRATOR

Birgit Espertshuber  
0991 3615-714  
birgit.espertshuber@th-deg.de  
EC 2.13





**MASTER**  
**DIGITAL HEALTH**  
**(MEDICAL INFORMATICS)**

# DIGITAL HEALTH: THE FUTURE IS NOW!

Information and Communication Technologies (ICT) are rapidly changing the way medicine and healthcare are practiced, researched, studied, and taught.

Whether you think of Electronic Health Records and Health Information Systems, Telemedicine and Virtual Visits, Mobile Health and Remote Monitoring, Digital Imaging and Virtual and Augmented Reality, Sensors and AAL, Artificial Intelligence, Robotics and

Data Analytics, or Genomics and Personalized Medicine – the domain of Digital Health has become the main area of exciting innovations and developments in medicine and healthcare.

This is your unique chance to become a specialist of the future, to join a cohort of professionals who will be shaping the world of healthcare in the decades to come!

## COURSE CONTACTS



### COURSE COORDINATOR

Prof. Dr. Georgi Chaltikyan  
0991 3615-8814  
georgi.chaltikyan@th-deg.de  
EC 2.05



### COURSE ASSISTANT

Brigitte Hiefinger  
0991 3615-8845  
brigitte.hiefinger@th-deg.de  
EC 2.14



### CENTRE FOR STUDIES EXAM ADMINISTRATOR

Monika Hellbauer  
0991 3615-8887  
monika.hellbauer@th-deg.de  
EC 2.13



**MASTER**

**GLOBAL PUBLIC HEALTH**

# GLOBAL PUBLIC HEALTH - YOUR FUTURE IN WORLD HEALTHCARE!

This postgraduate joint degree programme in Global Public Health is designed to enable you as a graduate of international healthcare to meet modern, multidisciplinary requirements in a globalised, dynamic healthcare system. You will learn how knowledge in Global Public Health is managing and promoting health in addition to preventing illness. The course focuses on public health in industrialized as well as in developing areas of the world, as you will explore major global health problems and their relation to culture, politics, human rights and ethical values.

Topics learnt during the semester on campus are explored in more depth during the winter school at the European Campus in charming Lower Bavaria close to the Austrian border, and during the Summer School in Kuopio, Finland where you are surrounded by a wonderful lake area.

## 2 universities - 1 unique degree

You will study at two universities for one unique degree at the forefront of European university integration, organised by our international campus, the European Campus Rottal-Inn together with the Savonia University of Applied Sciences in Finland. Gain direct access to the faculties of two different universities and benefit from the many advantages of studying equally at two top institutions; such as a larger selection of research topics, doubled access to potential employers, and the opportunity to develop your intercultural and language skills.

## COURSE CONTACTS



### INTERNATIONAL AND COURSE COORDINATOR

Prof. Dr.-Ing. Thomas Spittler  
0991 3615-8859  
thomas.spittler@th-deg.de  
EC 2.05



### COURSE ASSISTANT

Brigitte Hiefinger  
0991 3615-8845  
brigitte.hiefinger@th-deg.de  
EC 2.14



### CENTRE FOR STUDIES EXAM ADMINISTRATOR

Monika Hellbauer  
0991 3615-8887  
monika.hellbauer@th-deg.de  
EC 2.13



**MASTER**  
**HEALTHY AND SUSTAINABLE**  
**BUILDINGS**

## HEALTHY AND SUSTAINABLE BUILDINGS- ENERGY EFFICIENT, ECO-FRIENDLY CONSTRUCTION

With this master's degree you will gain the qualifications and skills for an international career in the future-orientated sector of healthy and sustainable buildings. It will broaden your existing knowledge in areas such as construction engineering, architecture, technical building equipment, energy-efficient construction and similar courses.

You will become a competent specialist in the field of healthy buildings and healthy living conditions, in

material selection and product development or selection through-out construction and interior facilities, and technical planning including renovations and restorations.

Additionally, there are fields of work in the digitalisation and automation allowing for modern material flow for the entire life cycle of buildings up to their demolition.

### COURSE CONTACTS



#### COURSE COORDINATOR

Prof. Dr. Michael Laar  
0991 3615-8873  
michael.laar@th-deg.de  
EC 2.04



#### COURSE ASSISTANT

Verena Hager  
0991 3615-8870  
verena.hager@th-deg.de  
EC 2.19



#### CENTRE FOR STUDIES EXAM ADMINISTRATOR

Tamara Kroll  
0991 3615-8818  
tamara.kroll@th-deg.de  
EC 2.13



**MASTER**

**INTERNATIONAL  
TOURISM DEVELOPMENT**

H E R N O C E A



## INTERNATIONAL TOURISM DEVELOPMENT - EXPERTISE IN DYNAMIC GLOBAL TOURISM TRENDS!

In this postgraduate degree, you will deepen your knowledge of cross-sector industries in the health and tourism sector, such as spas, prevention centres, rehab clinics, sports centres, recreation, leisure and culture centres.

Global tourism trends will be included in this course, such as health and wellness tourism due to demographic change and rising health consciousness, conti-

nued globalisation and urbanisation of destination package deals, the development of new international destinations, increased digitalisation in the tourism industry through website booking engines, increased customisation of travel packages with dynamic packaging, social networks as a communication base for marketing and travel destination reviews, and trends towards ecological, green tourism.

### COURSE CONTACTS



#### COURSE COORDINATOR

Prof. Dr. Marcus Herntrei  
0991 3615-8842  
marcus.herntrei@th-deg.de  
EC 2.07



#### COURSE ASSISTANT

Verena Sedlatschek  
0991 3615-8812  
verena.sedlatschek@th-deg.de  
EC 2.14



#### CENTRE FOR STUDIES EXAM ADMINISTRATOR

Birgit Espertshuber  
0991 3615-714  
birgit.espertshuber@th-deg.de  
EC 2.13





## SERVICE CENTRES

THE SUPPORT AND SERVICES THAT ARE PROVIDED FOR STUDENTS ARE OF THE UTMOST IMPORTANCE

Whether you are thinking of completing a semester abroad or need to have your application form checked for an internship, the Institute for International Affairs, Languages and Careers will be pleased to assist and support you.

As the campus infrastructure is well-developed with all service centres integrated, students can resolve issues very fast and efficiently.



## CENTRE FOR STUDIES

We are happy to advise you on all matters concerning the application process and admissions, as well as give you academic advice during your studies about aspects concerning examination regulations and the completion of internships.

Your personal information is kept on register here, so please inform us of all changes (especially name and address changes) in due time.

### WHERE TO FIND US

EC 2.13 | EC 2.19

### OPENING HOURS

Mo -Th | 9am - 12 noon, 1 - 3pm

Fr | 9 - 11.30am

Please make appointments in advance.

### WEB

[www.th-deg.de/en/students/documents](http://www.th-deg.de/en/students/documents)

## CENTRE FOR STUDIES CONTACTS



**Birgit Espertshuber**

Head of Division,  
Centre for Studies - ECRI

0991 3615-714  
birgit.espertshuber@th-deg.de  
EC 2.13

## EXAM ADMINISTRATION CONTACTS



**Birgit Espertshuber**

ITM-B, ITD-M

0991 3615-714  
birgit.espertshuber@th-deg.de  
EC 2.13



**Monika Hellbauer**

HI-B, DH-M, MI-M, GPH-M

0991 3615-721  
monika.hellbauer@th-deg.de  
EC 2.13



**Tamara Kroll**

IE-B, ESE-B, HSB-M

0991 3615-8818  
tamara.kroll@th-deg.de  
EC 2.13



**Bernadette Obermaier**

Processing AWP, decorative  
degree certificates

0991 3615-8869  
bernadette.obermaier@th-deg.de  
EC 2.19



# LANGUAGES AND ELECTIVES

The Language and Electives Centre offers various opportunities to develop competence in foreign languages as well as in social skills, methodological competences and orientational knowledge. The language and elective courses (AWP) are in some degree courses integrated into the curricula in the compulsory or elective areas. Independently of this, all courses can also be chosen on a voluntary basis as long as there are still free slots available.“

An “AWP” subject is defined in the study and examination regulations as a compulsory elective subject of a general academic nature (“Allgemeinwissenschaftliches Wahlpflichtfach”) that must be successfully completed. Subjects can be chosen from the following three areas: social and methodological competency, orientational knowledge, languages.

Regular offered courses are German, English, Spanish and French. In case of enough students being interested, also Russian, Chinese, Portuguese and Czech.

At the end of semester breaks, intensive language courses take place for one or two weeks. For all languages other than German, the topics of a 2-SWS course are covered in one course week. International

students on the contrary have the chance to learn or improve their German skills on campus in 4-SWS intensive courses during the semester break within two weeks.

Compulsory attendance: a language lives on when it is heard and spoken. Please note that in all language courses, students are required to attend at least 75% of all lectures in order to enter the exam. According to this 75% rule, for subjects worth 2 ECTS, a student can be absent only three times\* during the semester and for subjects worth 4 ECTS, a student can be absent only six times\*.

\*One time = 2 Teaching Units = 2x45 minutes

Language certificates can be achieved (TestDaF, telc, TOEIC, DAAD language certificates, university-specific foreign language certificates). They certify the level of a student’s language skills and are often required when applying for scholarships, study semesters or internships abroad.

For more information and registration please contact [tandem-ecri@th-deg.de](mailto:tandem-ecri@th-deg.de).

## LANGUAGE AND ELECTIVES CONTACT



**Tanja Mertadana**  
Head of Language and  
Electives Centre

sprachenzentrum@th-deg.de



**Katharina Stöger**  
Centre for International Affairs  
Coordination ECRI, Onsite Contact

0991 3615-261  
katharina.stoeger@th-deg.de  
EC 2.20

## LANGUAGE LECTURERS



**Carmen Ocampo-Gradel**  
German as a foreign language,  
Spanish

0991 3615-8847  
carmen.ocampo-gradel@th-deg.de  
AA 217



**Michaela Stangl, M.Ed.**  
German as a foreign language,  
Spanish, French

0991 3615-8841  
michaela.stangl@th-deg.de  
AA 218



**Dr. Barbara Wasner**  
German as a foreign language

0991 3615-8846  
barbara.wasner@th-deg.de  
AA 218



**Dr. Richard Ricot**  
Technical English, Business English

0991 3615-8905  
richard.ricot@th-deg.de  
AA 217



## CAREER SERVICE

We are a contact point for students who are looking for an internship or a permanent job while writing their thesis.

Apart from individual career and application coaching, we also organize an online job fair aimed directly at DIT and ECRI students.

Furthermore, we are a contact point for students who chose academic studies combined with vocational training (Verbundstudium) or intensive in-company training (vertiefte Praxis).

We also offer the Job Rock-It program where students are provided with the skills to successfully find an internship, a working student position or a company collaboration for their bachelor/master thesis.

Additionally, we support the DIT Startup Campus with business start ups.

### WHERE TO FIND US EC 2.20

**WEB**  
[www.th-deg.de/en/students/career](http://www.th-deg.de/en/students/career)

**EMAIL**  
[career-service@th-deg.de](mailto:career-service@th-deg.de)



# CAREERS SERVICE SUPPORT PROGRAMME

## CAREER AND APPLICATION COACHING.

- How to apply in English and German
- How to prepare a personal skills profile
- Development of application strategies
- Job application form check
- Online job fair: [career.th-deg.de](http://career.th-deg.de)
- Preparation for a job interview
- Preparation for an assessment centre
- Master advice and support
- DIT job newsletter

## SEMINARS AND WORKSHOPS

- Job skills
- IT skills
- Study and personality competence
- AdA course - training to be a supervisor
- Career Service electives and professional and personal competence course

## OTHER PROGRAMMES, EVENTS, SCHOLARSHIPS & CO..

- Domestic scholarships
- Mentoring programmes
- JOB Rock-IT programme
- Business startup support with Startup Campus

European Campus annual job fair:  
[www.th-deg.de/en/students/career](http://www.th-deg.de/en/students/career)  
#firstcontact

## CAREER SERVICE CONTACTS



**Claudia Probst**  
Head of Career Service

[career-service@th-deg.de](mailto:career-service@th-deg.de)  
DEG B 219



**Franziska Durner**  
Career Service Advisor,  
Onsite Contact

0991 3615-261  
[franziska.durner@th-deg.de](mailto:franziska.durner@th-deg.de)  
EC 2.20



**Katharina Stöger**  
Centre for International Affairs  
Coordination ECRI, Onsite Contact

0991 3615-261  
[katharina.stoeger@th-deg.de](mailto:katharina.stoeger@th-deg.de)  
EC 2.20



# INTERNATIONAL CAREER SERVICE

## IT'S NOT ROCKET SCIENCE TO FIND A JOB IN GERMANY!

### **Job Rock-IT explained:**

When you register for Job Rock-IT, you have the chance to participate in a range of lectures, workshops and seminars that will provide you with the skills to successfully find an internship, a working student position or a company collaboration for your bachelor/master thesis and later professional full-time employment in Germany.

Please note that you must participate in the classes in a specific order. By completing each level you will unlock rewards to help you with your studies, and after finishing all three levels you will receive a certificate of completion.

After registration, you will receive an email to your student account containing a link to the seminar platform where you can sign up for each seminar individually.

### ENQUIRIES & REGISTRATION

[jobrockit@th-deg.de](mailto:jobrockit@th-deg.de)

If something comes up that prevents you from attending a seminar you are registered for, you are required to inform us at least 24 hours before the seminar takes place. Otherwise you are excluded from the Job Rock-It programme.

We can't guarantee a place in every seminar or that all seminars are held every semester. Therefore, we ask you to sign-up as soon as possible!

# JOB ROCK-IT SEMINAR GUIDE

Well done, you have completed all three levels and are now fully prepared to rock your job!

## LEVEL 3:

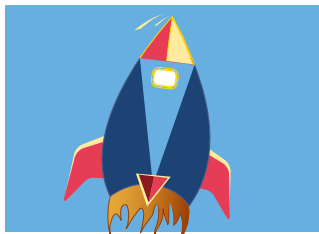


Seminars:

- Introduction to German labour law
- Preparing for working life in Germany



## LEVEL 2: UPWARDS & ONWARDS



Seminars:

- Individual CV check
- How to convince in a job interview



## LEVEL 1: FIRE-UP & TAKEOFF



Seminars:

- Intercultural training
- How to apply to German companies
- Visa regulations and their importance for daily life
- Scientific methods



## ACADEMIC COUNSELLING

Our Academic Counselling provides advice for prospective students, applicants and students about studies and university life.

We offer a wide, objective and confidential counselling for the following topics:

- Study course selection and orientation
- University entrance qualifications without A Levels
- Transition from Bachelor to Master
- Change of study course and study alternatives

Don't hesitate to contact us!

### WHERE TO FIND US

EC 2.20

### OPENING HOURS

Mo - Th | 9am - 12 noon, 1 - 3pm

Fr | 9 - 11.30am

### WEB

[www.th-deg.de/en/advice](http://www.th-deg.de/en/advice)

## ACADEMIC COUNSELLING CONTACTS



**Alexandra Niewöhner**  
Head of Academic Counselling

0991 3615-373  
alexandra.niewoehner@th-deg.de  
DEG B 221



**Franziska Durner**  
Academic Counsellor  
Onsite Contact

0991 3615-261  
franziska.durner@th-deg.de  
EC 2.20



**Katharina Stöger**  
Centre for International Affairs  
Coordination ECRI, Onsite Contact

0991 3615-261  
katharina.stoeger@th-deg.de  
EC 2.20

## OSKAR-KARL-FORSTER SCHOLARSHIP

The Oskar-Karl-Forster-Scholarship (Büchergeld) supports talented applicants in financial need (e.g. students entitled to receive BAföG grants).

The scholarship supports the purchase of textbooks and other study material with a one-off payment between €100 and €500. Applicants must have studied for at least two semesters at DIT and not yet have completed the sixth semester. This scholarship is not bound to religion, faculty or nationality.

In case of any questions concerning the Oskar-Karl-Forster-Scholarship, Kathrin Kuffer is your main contact person who will help and guide you. Please hand in the application form to Daniela Schwertlinger complete with original invoices for the books and study materials. Application forms can be found at room EC 2.20. Please be aware that you are not legally entitled to this scholarship.

## OSKAR-KARL-FORSTER CONTACT



**Kathrin Kuffer**  
Policy Officer,  
Centre for Studies and Education

0991 3615-738  
kathrin.kuffer@th-deg.de  
DEG B 101



# STUDENT COUNSELLING SERVICE

During your studies, you want to build up the necessary professional and social skills and gain important experience for the future, in order to realise your own potentials later in life. However, not everything always goes according to plan and unexpected problems might occur. In this case, you might want to contact our new „Student Counselling Service“ (StuCoS) at the European Campus Rottal-Inn!

The StuCoS aims at students who feel the need to talk confidentially about themselves and their personal situation. It helps you with general issues of daily life and social integration, conflicts with fellow students, teachers or in your relationship, psychological stress caused by studying, questions or concerns that often come up in connection to your studies etc.

## STUCOS IN PERSON

Claudia Nikitsin is a qualified Educational Scientist and certified telephone counsellor with many years of experience in guidance counselling. She has additional training in learning guidance, non-violent communication and mental health.

## REACH OUT

If you need help or someone to talk to please write an email with a short description of your personal concerns to arrange a personal counselling appointment:

[stucos-ecri@th-deg.de](mailto:stucos-ecri@th-deg.de)

## CONTACT



**Claudia Nikitsin**

Research assistant and deputy faculty women's rep at ECRI

[stucos-ecri@th-deg.de](mailto:stucos-ecri@th-deg.de)



## INTERNATIONAL OFFICE

### The International Office

- Is responsible for all co-operations with partner universities and coordinates the EU Erasmus+ programme
- Offers guidance to international students, university guests and scholarship recipients
- Supports international students with intercultural events and training sessions, including "Orientation Day"
- Hosts the "KULTURcafé" for students and local residents to encourage intercultural exchange
- Organizes multiple information sessions for students wishing to spend a semester abroad at one of our partner universities or as freemover and also for internship abroad or summer schools
- Helps with application documents for an internship abroad (CV check)

Appointments are available for individual guidance sessions, in-person or virtually.

### WHERE TO FIND US

EC 2.20

### OPENING HOURS

Mo - Th | 9am - 12 noon, 1 - 3pm  
Fr | 9 - 11.30am

### WEB

- [www.th-deg.de/en/students/internationals](http://www.th-deg.de/en/students/internationals)
- <https://ilearn.th-deg.de/course/view.php?id=10178>

### CONTACT



#### Daniela Schwertlinger

International Office ECR

0991 3615-8843

[daniela.schwertlinger@th-deg.de](mailto:daniela.schwertlinger@th-deg.de)

EC 2.20



## INTERNATIONAL THD-ALUMNI

THD-Alumni offerings begin well before the end of your study: formats such as alumni talk, job shadowing, alumni profiles on the website or alumni stories offer early opportunities to network with graduates of DIT, privately, as well as professionally. Here, alumni provide interesting insights into professional life, offer guidance for choosing a major, or open up the opportunity to get to know exciting companies „from the inside“. The Career Service mentoring program (with many alumni mentors) has recently been supplemented by the International Mentoring Program. This purely digital format is aimed particularly at international students, who are assigned an international alumni as mentor at their side.

An entry in our graduate book, which is of course free of charge, makes it possible to present one's own profile to more than 200 companies in the region at the same time. Students are regularly contacted by potential employers, hired from the book. In addition, this, actually printed, work is a nice reminder of the study time.

At the end of your studies THD-Alumni organizes the graduation ceremony where you can celebrate together with fellow students, friends and family members as a conclusion to this completely special time.

### WEB

[www.th-deg.de/en/alumni](http://www.th-deg.de/en/alumni)

After graduation, THD-Alumni offers numerous opportunities for networking within a variety of events and seminars. The seminars for (young) professionals impart professional competencies as well as the expansion of personal skills. Regular homecomings bring alumni back to campus. THD-Alumni also supports the initiatives of former students who want to organize private reunions on campus.

In addition, THD-Alumni regularly conducts the alumni survey. This important tool of quality assurance helps to make the study programs better and better, but also to design the offers for alumni according to the requirements of the graduates.

Last but not least, the network association AlumniNet is supported by THD-Alumni. Socializing events, trips abroad, company visits are only a few of the offers of this association, which unites members from all courses of study and of all ages. By the way, student members are free of charge until the end of their last degree.



## OUR SERVICES

### FOR ALUMNI

- Absolventenbuch (graduate book)
- Alumni survey
- "Post-Graduate" Alumni online magazine
- AlumniNet network
- AlumniNet business trips
- Job Shadowing programme
- Networking events (for Alumni and students)
- Alumni talks
- Graduation ceremonies

### FOR INTERNATIONAL STUDENTS

- International Mentoring Programme
- "How to apply to German companies" lecture
- Job Rock-it programme

## CONTACTS



**Ulrike Sauckel**  
Head of International  
and Alumni Affairs

0991 3615-202  
ulrike.sauckel@th-deg.de  
DEG B 217



**Stefanie Lex**  
Job Shadowing, Graduation  
Ceremony, Social Media

0991 3615-306  
stefanie.lex@th-deg.de  
DEG B 203



**Heidi Seyschab**  
Alumni Affairs and  
AlumniNet e.V.

0991 3615-256  
heidi.seyschab@th-deg.de  
DEG B 203



**Lisa Geppert**  
International Alumni Affairs

0991 3615-393  
lisa.geppert@th-deg.de  
DEG B 203



# FAMILY AFFAIRS

Welcome to Family Affairs at the Centre for Studies and Education. We are here to help you with all your questions about studying with a child and relatives in need of care. It is a great challenge to reconcile studying with childcare or caring for relatives.

At the Deggendorf Institute of Technology, the Family Affairs staff provide support and information on study organisation, financial aid, childcare options and many other open questions.

**WEB**  
[www.th-deg.de/en/study-with-us/advice-support/study-with-family](http://www.th-deg.de/en/study-with-us/advice-support/study-with-family)

Find detailed information on our wide range of services, such as babysitter exchange, KidsBox and child holiday care.

## CONTACTS



**Andrea Ebertseder**  
Centre for International Affairs

0991 3615-8863  
andrea.ebertseder@th-deg.de  
EC 2.14



**Anita Reither**  
Studies and Student Affairs

0991 3615-526  
anita.reither@th-deg.de  
DEG B 206

# Der größte Netzwerk-Verein der THD feiert Geburtstag!



[alumninet.th-deg.de](http://alumninet.th-deg.de)





## LIBRARY

In the library, you can find books about the courses offered on campus, as well as literature that is generally needed for your studies, such as language textbooks, books for scientific work, etc.

At present, the library includes about 7,000 printed books and several printed magazines. A far larger inventory is available online in the form of e-books and electronic magazines.

Books from the main library in Deggendorf can be ordered. Your library account will be setup and ready to use after participation in a library introduction. Please sign up for an appointment at the information desk in the library.

There are 12 desks in the library, 10 of which are equipped with a PC. You also have WiFi if you prefer to work with your laptop.

Jackets, bags, food and drinks are forbidden in the library, except for transparent bottles of water.

### WHERE TO FIND US

EC 0.09 - 0.12

### OPENING HOURS

Mo - Th | 9.30 - 10am, 1 - 5pm

Fr | 9.30am - 12 noon

Opening hours are subject to change!

### WEB

[www.th-deg.de/en/students/library](http://www.th-deg.de/en/students/library)

For learning in groups, there is an additional room on the ground floor (EC 0.17), near the lockers.

## LIBRARY CONTACTS

**Anja Bauer**  
Librarian

0991 3615-705  
anja.bauer@th-deg.de  
DEG G 008

**Christoph Lichtschläger**  
Librarian

0991 3615-8817  
christoph.lightschlaeger@th-deg.de  
EC 0.09 - 0.12

**Monika Stöckl**  
Librarian

0991 3615-8817  
monika.stoeckl@th-deg.de  
EC 0.09 - 0.12

## IMPORTANT INFORMATION

The spread of COVID19 has led to temporary changes in the way the library is used. It is organized with as little contact as possible!  
After all, everyone's health is our top priority.

We are constantly updating our website for you. At the beginning of the semester, you will be informed how to use the library.

## Discover your chance with us!

We are a globally active, family business in Lower Bavaria and offer all kinds of opportunities: from a student job to an internship for your practical semester to your final thesis and direct entry.

[www.Lindner-Group.com/karriere/stellenmarkt](http://www.Lindner-Group.com/karriere/stellenmarkt)



 **Lindner**





# IT SERVICES

All students receive a login valid for the time of their studies. This login grants access to the internet, a personal email account and all offered course materials.

Most of the services offered via the campus network can be accessed world-wide via web browser.

## OUR SERVICES

- Intranet - [intranet.th-deg.de](http://intranet.th-deg.de)
- IT support - [ec-it-support@th-deg.de](mailto:ec-it-support@th-deg.de)
- NextCloud - [nextcloud.th-deg.de](http://nextcloud.th-deg.de)
- Identity management system IDM - User account, password etc: [idm.th-deg.de](http://idm.th-deg.de)
- Changing passwords - [password.th-deg.de](http://password.th-deg.de)
- VPN (Virtual Private Network)
- Webmail - [webmail.th-deg.de](http://webmail.th-deg.de)
- Printing and scanning (self-service) on campus
- WIFI

## WHERE TO FIND US

EC 0.17

## OPENING HOURS

Mo - Fr | 1 - 2pm web or virtually, due to the current Corona situation

## EMAIL

[ec-it-support@th-deg.de](mailto:ec-it-support@th-deg.de)

## WEB

[www.th-deg.de/en/students/it-services](http://www.th-deg.de/en/students/it-services)

## FLYER

[www.th-deg.de/Studierende/IT-Services/flyer\\_first\\_steps\\_in\\_the\\_it.pdf](http://www.th-deg.de/Studierende/IT-Services/flyer_first_steps_in_the_it.pdf)

## ESSENTIAL WEBSITES FOR ALL STUDENTS

Please note: Services from individual faculties are currently not included.

- Primuss portal for study reports, exams, grade sheets  
[www.primuss.de/portal-thd](http://www.primuss.de/portal-thd)
- iLearn  
[www.ilearn.th-deg.de](http://www.ilearn.th-deg.de)
- DreamSpark registration to download Microsoft software  
<https://intranet.th-deg.de/en/angebote/dreamspark>
- Internship semester  
[www.th-deg.de/en/students/documents#internship](http://www.th-deg.de/en/students/documents#internship)
- Exam registration is in Primuss portal

## HOW TO USE IT SERVICES

**1. Membership form** - Our campus provides a variety of information technology services including access to the IT-Labs, printing and scanning facilities. In order to gain access to the ECRI IT services you need to apply once during the enrolling process and your membership will be valid over the entire time of your study. Any questions? Please contact out Center for Studies.

### 2. Check-in

- For the duration of your studies you will receive the following from the university:
  - a user account
  - a mail account
- For the check-in you will receive a message with an individual link to your private e-mail address
- In the first step, you will be asked to enter your matriculation number for verification purposes
- Please note: Your matriculation number can be found on your admission registration certificate and is not the same as the applicant number
- Check your data. If the information is correct, confirm it. If this is not the case, please contact the IT support

#### Password and User Account

- Please choose your password now. The standard password has to include:
  - 10 to a max. of 32 characters
  - upper/lower case letters, numbers and special characters, but no spaces
- Your accounts will be displayed and are ready to be used

#### Example:

Hans Muster (Matr. no. 00123456), born 05.12.2000,  
=> Matr. no. 00123456 => hm05456

**Important:** Your matriculation number can be found on your admission certificate and is different to your application number.

**Changing your password:** <https://idm.th-deg.de> (access only on campus or via VPN)

**Forgotten password:** [password.th-deg.de](http://password.th-deg.de)

### 3. Important network drives

- I: your own home drive (5 GB)
- V: central drive (hub)

### 4. Email address - `firstname.lastname@stud.th-deg.de`

In case of similar names, the email address will be extended by a consecutive number:

- `firstname.lastname2@stud.th-deg.de`

Your email password - see step 2.

Visit <https://idm.th-deg.de> (access only on campus or via VPN) if unclear what your email address looks like.

**5. Student email distribution lists** - sending of emails to student distribution lists is only possible via the MoM web application: <https://mom.th-deg.de> (access only on campus or via VPN).

**6. Public distribution lists** - to receive further information by email (news, events, etc.), you can subscribe to the appropriate public distribution lists at <https://idm.th-deg.de> in the menu item "Public distribution lists".

### 7. Important internet addresses -

- The university website: <https://www.th-deg.de/en>
- Access to the email system: <https://webmail.th-deg.de>
- Intranet: <https://intranet.th-deg.de/en> (only accessible on campus or via VPN)
- E-Learning: <https://ilearn.th-deg.de>
- Cloud storage: <https://nextcloud.th-deg.de>

**8. Printing and photocopying** - in order to gain automatic access to printing, copying and scanning facilities you have to self-associate your student card once.

There is one method to associate the student card with your DIT account: swipe your card at photocopier and enter your credentials on the display.

From that point you only need to swipe your card in order to release a printing job or access a multi-functional device.

You can top up your print credit at the terminal next to photocopier in EC 0.17.

Further information can be found in the intranet at: <https://intranet.th-deg.de/en/rz/drucken>

**9. Introductory sessions** - many faculties organise an IT introductory session at the beginning of the 1st semester. You will receive more information from your faculty.

**10. Certificate of enrolment** - open the Primuss-portal, <https://www.primuss.de/portal-thd>

- Login with your user name; see step2
- Click on "My Study"
- Click on "Continue with Notifications"
- Select the required form of enrolment certificate.

A PDF-file will be created which can be printed or saved and sent by email.



### 11. Network access

- WLAN "eduroam", for details see intranet: <https://intranet.th-deg.de/en/rz/wlan/eduroam>
- WLAN "@BayernWlan"
- VPN access via the WLAN "campus-vpn" or externally, for details see intranet: <https://intranet.th-deg.de/en/rz/vpn>

### 12. Useful websites & IT services for students - <https://intranet.th-deg.de/en/angebote>

Microsoft Azure Dev Tools for Teaching (e.g. Windows 10)

- Microsoft Office 365 ProPlus
- Sophos Antivirus
- CampusAuction (auction system)
- Pinboard (small advertisements)
- Survey systems (LimeSurvey, THDoodle)

### 13. Student IT Support

For any problems relating to the IT facilities our IT-support team will be happy to help you

- E-mail: [it-support@th-deg.de](mailto:it-support@th-deg.de)

Personally: Student IT Support on ECRI will either take place weekdays 1-2pm in the Copy Room 0.17, or virtually, due to the current Corona situation. Please consider current facebook and iLearn announcements.

## IT SERVICE CONTACTS



**Ilona Seifert**  
Lab Engineer

0991 3615-755  
[ilona.seifert@th-deg.de](mailto:ilona.seifert@th-deg.de)  
EC 2.16



## E-LEARNING

Learning with electronic aids, such as video instructions on youtube, has become part of everyday life. However, especially when it comes to building deeper knowledge, you need a good orientation in today's flood of information.

Our e-learning uses modern information and communication technologies to enable students to learn self-determined with electronic media.

### LECTURE SCRIPTS & VIDEOS

Regular courses usually have a virtual course room on our learning platform iLearn. Here you will find, for example, learning content or learning materials provided to you by our lecturers as part of your courses. You can organize group work and exchange ideas productively. You can log in with your general DIT university account.

On the page <https://ilearn.th-deg.de/> you can select your faculty in the menu item „course areas“, find the courses for your lectures there and register for these.

For most courses you will need an access key which

### E-LEARNING COMPETENCE CENTRE

#### EMAIL

[elearning-support@th-deg.de](mailto:elearning-support@th-deg.de)

#### WEB

<https://ilearn.th-deg.de>

will be given to you at the beginning of the semester by your study assistant or lecturer.

In addition to the course of your study programme, you will also find learning videos, courses of the Languages and Elective center, Career Service, General Engineering and the International Office on this learning portal.

In case you are having virtual lectures via means like Microsoft Teams or Zoom and in case of having questions regarding those, you can also turn to us, we are happy to help!





# VIRTUELLE HOCHSCHULE BAYERN

## THE CONCEPT

The Virtuelle Hochschule Bayern (vhb) offers free, high-quality e-learning material to all students enrolled at a University in Bavaria. Other users can pay for these services and have to meet entry and approval criteria set by the course providers. The material is financed by the state of Bavaria, put together by University lecturers of the vhb and examined by experts.

VIRTUELLE  
HOCHSCHULE BAYERN

WEB

[www.th-deg.de/it-services-en#e-learning](http://www.th-deg.de/it-services-en#e-learning)

## SUPPORT & COMMUNICATION

There are specially trained online tutors, who help new students with all their questions and problems during the course period, which is mostly the same as the course periods at the co-operating universities. There are tutors for every course - no one is left alone in front of a computer screen. There is also conversation with other students.

## COURSE ASSESSMENT

Vhb courses are either integrated into the curriculum or can be used for further training.

A course assessment is offered for every course. Whether and how the vhb courses and offers not integrated in the curriculum can be tied into your regular course, should be discussed with the responsible faculty at your University before applying for a course with the vhb.





# QUALITY MANAGEMENT

The THD has been system accredited since September 2020. The Central Quality Management (CQM) carries out the internal accreditation procedures and, as an independent unit, supports faculties and institutions of the DIT in the implementation of their quality-improving measures.

The task of the ZQM is to control and document all aspects of the quality of study, academic teaching and further education and related services in a targeted manner in a quality management system.

The Central Quality Management supports each faculty in developing ambitious and challenging courses that are attractive on both a national and international scale.

## WEB

[www.th-deg.de/en/dit/quality-management](http://www.th-deg.de/en/dit/quality-management)

## CQM RESPONSIBILITIES

- Further development of the QM system
- Improvement management
- Internal audits and internal reviews
- Support with programme accreditations
- Statistics
- Evaluation and surveys
- Quality reports and quality strategies



## QUALITY ASSURANCE CONTACTS



**Ute Kaul**  
Head of Central Quality  
Management

0991 3615-430  
ute.kaul@th-deg.de  
DEG ITC2 2.47



**Karina Bielmeier**

0991 3615-535  
karina.bielmeier@th-deg.de  
DEG ITC2 2.59



**Daniela Stidl**

0991 3615-139  
daniela.stidl@th-deg.de  
DEG ITC2 2.59



**Tobias Preuß**

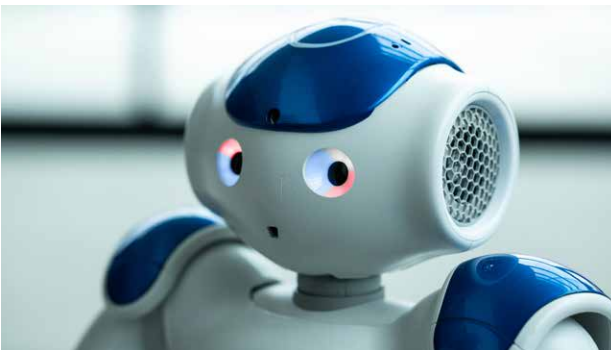
0991 3615-668  
tobias.preuss@th-deg.de  
DEG ITC2 0.18



**Benjamin Nädele**

0991 3615-623  
benjamin.naedele@th-deg.de  
DEG ITC2 0.22

## YOU HAVE A BRILLIANT IDEA? LET US KNOW!



We look forward to receiving your innovative suggestions for our improvement management:

<https://pmit-ext.th-deg.de/im/login>



# STUDENTENWERK (STUDENT UNION) COUNSELLING

## SOCIAL COUNSELLING

Student life can include many social or financial challenges and at times like this, students sometimes need individual and competent practical advice.

In such situations, the Studentenwerk's social counselling is open to all European Campus students and is the right place to go. Foreign students are also supported by international tutors from the social counselling service.

## PSYCHOLOGICAL COUNSELLING

- Individual psychological counselling
- In all types of crises and stresses
- For all types of psychological symptoms such as (exam) anxiety, depression, addiction, loneliness, disorientation
- Networking with other contact points and help with finding therapy places
- Learning advice

In German and English

### CONTACT

Zsofia Schnelbach  
0851 509-1900  
schnelbach.z@stwno.de

### OFFICE HOURS

[www.stwno.de/en/counseling/kontakt-6-en](http://www.stwno.de/en/counseling/kontakt-6-en)

### APPOINTMENTS

[psychologische-beratung@stwno.de](mailto:psychologische-beratung@stwno.de)

### CONTACT

Dipl. Psych. Sofia Morogianni  
0941 943-3140  
morogianni.s@stwno.de

Dipl. Psych. Johanna Zechmeister  
0941 943-3270  
zechmeister.j@stwno.de

### OFFICE HOURS

[www.stwno.de/en/counseling/kontakt-6-en](http://www.stwno.de/en/counseling/kontakt-6-en)



# STUDENTENWERK (STUDENT UNION) CANTEEN

## CAMPUS CANTEEN

Buy your food and drinks at the campus canteen, which has a selection of sandwiches, snacks and drinks as well as a warm meal at lunchtime.

Outside of the opening hours, you are welcome to use our vending machines and coffee machine for self-service.

Pay cashless using your dining-hall or student card.

## OPENING HOURS

During the lecture periods, the canteen is open:

Mo - Th | 8am - 3.30pm

Fr | 8am - 2pm

Opening hours are subject to change!

Changes can be viewed at:

[www.stwno.de/en/gastro-en](http://www.stwno.de/en/gastro-en)





# STUDENTENWERK (STUDENT UNION) BAFÖG

## BAFÖG STUDENT GRANTS

BAFÖG is a type of governmental funding for students. You can find detailed information on BAFÖG on the website of your Studentenwerk (Student Union) and at [www.bafog.de](http://www.bafog.de).

How and where to apply for BAFÖG as a student at European Campus can be found on the website of the Studentenwerk Niederbayern/Oberpfalz: [www.stwno.de/en/financing/bafog](http://www.stwno.de/en/financing/bafog).

## ONLINE APPLICATION

Web: [www.bafog-bayern.de](http://www.bafog-bayern.de)  
App: [www.bafog-direkt.de](http://www.bafog-direkt.de)

## CONTACT

Doris Sigl  
0991 320-9727  
[th-deg@bafog-bayern.de](mailto:th-deg@bafog-bayern.de)

Marianne Wagner  
0991 320-9727  
[th-deg@bafog-bayern.de](mailto:th-deg@bafog-bayern.de)

## OFFICE HOURS

[www.stwno.de/en/financing/contact-financing](http://www.stwno.de/en/financing/contact-financing)





## PRACTICAL INFORMATION LIABILITY INSURANCE

### INSURANCES EXPLAINED

The most important and yet the least expensive insurance coverage you will need in Germany is third-party private liability insurance (Haftpflichtversicherung).

Liability insurance is used if you, as an insured person, cause damage to third parties or damage the property of third parties. Because it is stated by law that the perpetrator is liable for damages caused to others, Liability Insurance first checks whether the damage was clearly caused by you.

We recommend that our international students sign up for liability insurance during their studies in Germany. Not only for the costs of small mishaps (e.g. damage of mobile phones or lost room keys), but serious accidents as well (e.g. crashing into someone else's car by riding your bike) might be covered by liability insurance.

Terms and conditions differ from agency to agency. The monthly fee starts at 3 Euros, and the amount of coverage reaches up to 50 million Euros.

If you choose a tariff for a liability insurance, you should pay attention to the benefits included in your insurance tariff.

You should be aware that German third-party private liability insurances with either a three or five year term cannot be cancelled before the term is up. An insurance agent selling these term contracts will receive a higher commission for locking a client into a multi-year product. Our strong advice is to buy only annually renewable policies; there is absolutely no reason to take out a policy which leaves you unable to switch at a renewal date if a more attractive or a better quality insurance cover becomes available.



# STUDENT REPRESENTATION

## WEB

[www.studentischer-konvent.de](http://www.studentischer-konvent.de)

## SOCIAL MEDIA

[www.facebook.com/studentischerkonvent](https://www.facebook.com/studentischerkonvent)  
[instagram.com/studentischerkonvent](https://www.instagram.com/studentischerkonvent)

## EMAIL

[studentenvertretung@th-deg.de](mailto:studentenvertretung@th-deg.de)

We, the student representation are there for you as a contact point for all questions and problems and as an important entity for distributing information.

We can help you with all sorts of problems, ranging from acquiring old exam questions to general questions concerning subject combinations, specialization or problems with professors. Furthermore, we have a vote in the faculty council and can forward and champion the interests of the students.

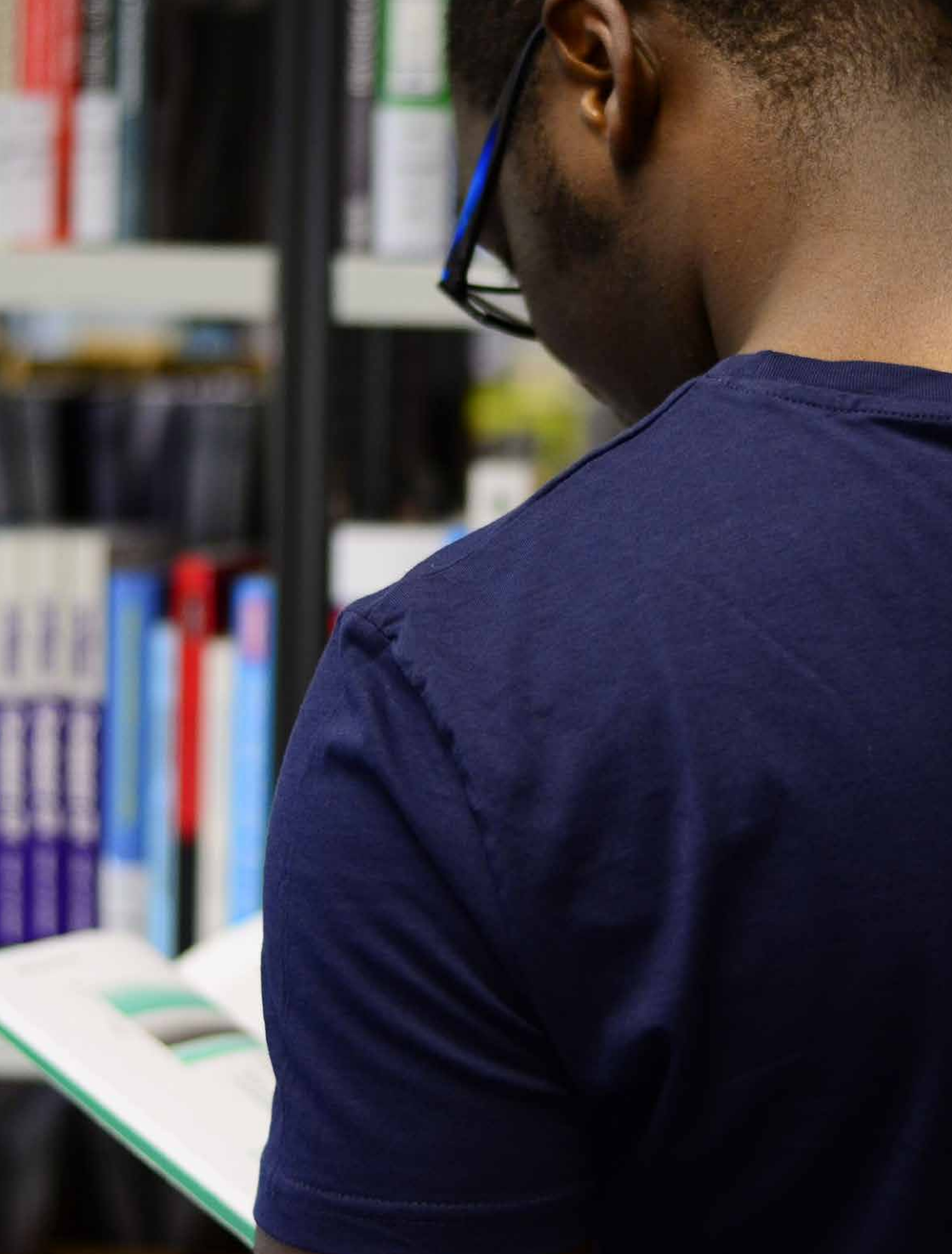
We would also like to contribute to the unique atmosphere on campus and the great relationships between students and professors or other staff.





EMERSON CAMPUS

N  
A  
T  
I  
O  
N  
A  
L





## STUDENT LIFESTYLE

STUDYING IS MORE THAN READING BOOKS  
AND ATTENDING LECTURES - THERE IS LIFE  
NEXT TO YOUR STUDIES

There is a multitude of extracurricular activities for students at the European Campus: music festivals, international days, skiing in winter and many other sports throughout the year.

Use your spare time joining student clubs together with your fellow students and meet new friends!



## SPORTS PROGRAMME

- Badminton
- Football (soccer)
- Functional training
- Indoor cycling
- Running group
- Squash
- Volleyball (beach volleyball in summer)
- Yoga
- **This is only a possible selection!**

The EC's sports programme has its focus on the health, community and socially inclusive aspects of sports. It gives students the opportunity to balance an akinetic study and work day. The offer focuses on popular sports.

To reach as many people as possible, DIT's programmes are updated regularly. Due to the requirements and regulations of the ministry, you have to register for the university sport now. More information can be found on the homepage or in ilearn (registration, course days, places and much more).

## CONTACT



**Carolin Stadler**  
Sports Programme Manager

0991 3615-406  
carolin.stadler@th-deg.de

### Please note:

EC has the right to change and amend the sports programme! Staff and students will be notified per message in ilearn or per email of any short-term venue unavailability. Sports held in school venue will be suspended during the school and semester holidays.

We are happy to welcome you to the university sports department!



## RESP E.V. STUDENT CLUB

Welcome to Pfarrkirchen and the European Campus Rottal-Inn. We know most of you probably came a long way from home, family and friends to get here. But don't worry, you're not alone.

In our experience if we all go together on this trip, the path is way easier and full of good memories. RESP e.V. commits itself to be a great companion during your studies.

Ask yourself - HOW?

We organise social, sporting, academic, recreational and (inter-)cultural events, e.g. pub crawls, football games, guest lectures, game nights and German café social events, or whatever project you would like to carry out.

Alright, here's some easy steps to get started:

1. Visit one of our online platforms:

- Resp e.V. (Facebook)
- @resp.ecri (Instagram)
- www.resp-ecri.de

or just send us an email at [resp@th-deg.de](mailto:resp@th-deg.de)

2. Make sure you take part in the Orientation Week in the beginning of each semester, where we can meet on a personal level.

3. Talk to us in person and share your ideas and projects with us...

...or just hang out with us! :D

See you around!!



# RESP e.V.

# NO MEANS NO – SEXUAL HARASSMENT



## WHAT IS SEXUAL HARASSMENT?

Sexual harassment involves all sexual behaviour that is unwelcome, disrespectful or hurtful.

### This involves:

- Jokes of a sexual nature
- Showing or displaying pornographic material
- Staring at someone
- Unwelcome touching of a person's clothing, hair, or body
- Derogatory sexual comments about a person's appearance, behaviour or private life
- Criminal offences such as stalking, sexual assault, rape

Sexual harassment is behaviour that is fundamentally different from flirting or giving compliments. It is unwelcome behaviour that often causes stress, insecurity, fear, depression and/or psychiatric problems that can lead in extreme cases to a complete breakdown of the victim involved.

Sadly, there are men and women in all business environments who have experienced sexual harassment – including at universities. Due to their hierarchical structure, dependency and power can be exploited and thus borders inappropriately violated.

In some cases, sexual harassment occurs hierarchically in the opposite direction. Victims often fear negative repercussions such as hostility, harassment or discrimination when they resist. This two way danger of abuse must be prevented.



## WHAT CAN PEOPLE IN POSITIONS OF RESPONSIBILITY DO?

Leadership skills include a sensitive approach to the topic of sexual harassment. It must not be tolerated, trivialised or ignored by people in positions of responsibility, such as professor or superiors. If sexual harassment is noticed or if you as a person in a posi-

tion of responsibility are asked for help, you must act immediately.

If you are not sure what to do in this situation, please contact the information centre you'll find on the following page.

## WHAT DOES OUR UNIVERSITY DO?

As a university, we aim for honest and open communication about the topic of sexual harassment. The university is committed to providing a study and work environment that promotes mutual respect. It goes without saying that sexual harassment will not be tolerated under any circumstances.

We are committed to the protection against sexual harassment by offering advice and counselling, train-

ing and workshops for staff members, students, superiors and victims of harassment or abuse.

Our aim is to establish safe working and study conditions and therefore maintain a climate of solidarity and equality in which anyone can speak up about sexual harassment without feeling afraid and without their opportunities for promotion or development being restricted.

## WHAT CAN YOU DO?

Many victims don't speak up about their experience due to the fear of being judged as prudish, hypersensitive or lacking a sense of humour. However, ignoring abuse is the least effective way to deal with sexual harassment and is often seen as consent.

Quick-witted or jockey replies are equally ineffective in dealing with abuse. Victims should express themselves in clear words, emphasizing unwelcome behaviour as unacceptable, while making it clear that they

are not to blame for the harassment!

- Don't wait for harassment to stop by itself!
- Don't keep things to yourself! Speak to a person you trust and reach out to the information centre.
- Clearly express that you find such behaviour unacceptable

*»Sexual harassment begins  
when signaled boundaries are crossed.«*



## WHO CAN YOU TURN TO?

You can turn to the following advice centres for confidential support.

No action can be taken without your consent!

### COMPANY MEDICAL SERVICE CENTRE

Herrn Dr. Meyer  
BAD Gesundheitsvorsorge und  
Sicherheitstechnik GmbH  
Ulrichsberger Straße 17  
94469 Deggendorf  
0991 291016-0

### WOMEN'S REPRESENTATIVES AT DIT

frauenbeauftragte.ecri@th-deg.de  
and  
stucos-ecri@th-deg.de

You decide which steps you would like to take. Additionally, the centres will inform you about relevant DIT training sessions.

### DIT EQUALITY APPOINTEE

Dieter-Görlitz-Platz 1, 94469 Deggendorf  
[www.th-deg.de/en/study-with-us/advice-support/equal-opportunities](http://www.th-deg.de/en/study-with-us/advice-support/equal-opportunities)

### DIT STAFF COUNCIL

Dieter-Görlitz-Platz 1  
ITC2 1.23  
94469 Deggendorf  
0991 3615-280  
[personalrat@th-deg.de](mailto:personalrat@th-deg.de)

### STUDENT UNION SOCIAL COUNSELLING SERVICE

[www.th-deg.de/en/study-with-us/advice-support/social-counselling](http://www.th-deg.de/en/study-with-us/advice-support/social-counselling)



## HOST FAMILY PROGRAMME

The Host Family Programme is a free, voluntary project involving a network of local residents who welcome international students into their homes for "Kaffee-und-Kuchen", a visit or short excursion in the area.

A Host Family visit will be an interesting and enriching experience while you are in Pfarrkirchen. It gives international students a more personal, first-hand experience in Bavaria and Pfarrkirchen and eases their transition into German culture. Being a part of the Host Family Programme gives international students the opportunity to make new friends, experience the family life of a local Pfarrkirchen family, and contributes to greater understanding of other cultures.

It is a unique opportunity to get away from the campus and meet local residents to find out more about the everyday life of this country by sharing it for a short time.

## CONTACT



**Andrea Ebertseder**  
Centre for International Affairs

0991 3615-8863  
andrea.ebertseder@th-deg.de  
EC 2.14



## ECRI BAND

The European Campus is proud to have a very active and successful student band. If you want to join in, please bring your instruments with you to Pfarrkirchen. Some instruments are available or can be purchased if urgently needed. A rehearsal space and required technical equipment are available.

Participating in the band is considered as an AWP subject and 2 ECTS can be granted if you are an active member of the band. Rehearsals are usually once

a week in the evening. The band tries to have two to four concerts each semester (such as winter/summer ball, half term party, summer festetc.). The songs to be played/rehearsed are selected jointly at the beginning of the semester.

Please note, the opportunity to join depends of course on the free slots available at anytime.

Come join in, it is tons of fun!

## CONTACT

**Prof. Dr. Sascha Kreiskott**  
Academic Dean, Dean of Studies

0991 3615-8851  
sascha.kreiskott@th-deg.de  
EC 2.06

## FURTHER INFORMATION

If you are interested, please contact Sascha Kreiskott. You can contact other members of the band as well.



# CERTIFICATE IN INTERCULTURAL COMPETENCE

In today's increasingly diverse world, set yourself (and your resume) apart by showing the initiative of working toward becoming more interculturally competent.

The Intercultural Competence Certificate is designed to show future employers that you have gained intercultural skills. It offers you the opportunity to learn about intercultural competence from different per-

spectives and to reflect on your intercultural skills in practice, at no additional cost to your tuition.

It usually will require 2-3 semesters.

There are no ECTS or grades awarded for any part of this certificate. It is not part of the curriculum.

## CONTACT

**Prof. Dr. Michelle Cummings-Koether**  
Coordinator, Intercultural Competence Certificate

0991 3615-8865  
iccecri@th-deg.de  
EC 2.06

## FURTHER INFORMATION

[www.th-deg.de/ecri-en#intercultural\\_competence](http://www.th-deg.de/ecri-en#intercultural_competence)



# GETTING AROUND - BUS SERVICE

## TOWN BUS SERVICE

There is a semester ticket available for the town bus of Pfarrkirchen.

For 50 euros you will get a personalized ticket for the semester valid from October 1 - March 14, or March 15 - September 30.

You can purchase it at the town hall (Rathaus II). Don't forget to bring your student ID card.

## SEEING THE REGION

Get around the stunning region of Rottal-Inn by using the advantages of this transport network, where you can buy combi bus and train tickets for the complete district of Rottal-Inn.

38 bus routes are included in the network and discounts are available for long term tickets.

### TIMETABLE AND ROUTE PLAN

[www.swpan.de/verkehr/stadtbus/fahrplaene-download](http://www.swpan.de/verkehr/stadtbus/fahrplaene-download) (only in German)

### FURTHER INFORMATION

[www.swpan.de/verkehr/stadtbus/pfarrkirchner-stadtbus](http://www.swpan.de/verkehr/stadtbus/pfarrkirchner-stadtbus) (only in German)

### TIMETABLE AND ROUTE PLAN

[www.vgrottal-inn.de/fahrplan](http://www.vgrottal-inn.de/fahrplan)

### FURTHER INFORMATION

[www.vgrottal-inn.de/startseite](http://www.vgrottal-inn.de/startseite)

### TRAIN

[www.deutschebahn.com/en](http://www.deutschebahn.com/en)



## HOW CAR SHARING WORKS

Pfarrkirchen has an affordable car sharing service if you need to use a vehicle and do not have your own. The service is sponsored by the city of Pfarrkirchen and the Sparkasse Rottal-Inn bank, who offer use of an e-car that is parked at the Pfarrkirchen train station.

You will have to register as a customer at [www.e-wald.eu](http://www.e-wald.eu) if you would like to use this car. This costs a one-time signup fee of six euros. Once you have done this, you will receive an e-mail with your E-WALD login information along with an attached customer contract. Take this, along with your driver's license, to the nearest service office to pick up your customer card.

Once you have done this, you will be able to book the car over the web site, by phone (fees may apply), or using the Flinkster app. During the time you have booked the car, it will open automatically by holding your customer card against the reader you'll see inside the windshield. You will find the ignition key inside its case in the glove box.

You will need to disconnect the charging cable using

the card from inside the car. Stow the cable before starting your trip. Return the car punctually to the station at the return time you booked.

You can find a complete list of prices on the web site. You will receive a monthly bill for your car usage.

### CAR SHARE SERVICE OFFICE

Bahnhofstraße 23  
84347 Pfarrkirchen

Mo - Fr | 5.30 - 11.30am, 12.30 - 2.45pm  
3.15 - 7.30pm

Sa - Su | 7 - 11.30am, 12.30 - 2.45pm  
3.15 - 7.30pm



## DOCTORS IN PFARRKIRCHEN

---

### GENERAL PRACTITIONERS

Dr. med.  
Harald Poschenrieder  
Bahnweg 10  
84347 Pfarrkirchen  
08561-1220

Dr. med.  
Ludwig Pfefferkorn jun.  
Kolpingstr. 19  
84347 Pfarrkirchen  
08561-9658-0

Dr. med. Joachim Pimmer  
Rottpark 24  
84347 Pfarrkirchen  
08561-8500

Reinhold Kainzmaier  
Bahnhofstr. 6  
84347 Pfarrkirchen  
08561-6393

Dr. med. Jürgen Sonntag  
Pflegerstraße 5  
84347 Pfarrkirchen  
08561-2500

Dr. med Riedl, Dr. Simon  
Schäfflerstraße 5a  
94347 Pfarrkirchen  
08561-6656

Dr. med.  
Monika Müller-Rampmaier  
Max-Breiherr-Str. 17  
84347 Pfarrkirchen  
08561-4188

Dr. med. Jan-Henry Petri  
Stadtplatz 33  
94347 Pfarrkirchen  
08561-4177

Dr. med.  
Gertraud Scherz-Willeitner  
Rottpark 22  
94347 Pfarrkirchen  
08561-984040

Dr. med. Kurt Sedlmeier  
Am Burggraben 1  
84347 Pfarrkirchen  
08561-6211

Dr. med. Andrea Weibel  
Rottpark 23 c+d  
84347 Pfarrkirchen  
08561-1407

### ORTHOPAEDISTS

Dr. med. Gernot Bauer  
Rottpark 22  
84347 Pfarrkirchen  
08561-96333

Dr. med. Michael Fent  
Rottpark 22  
84347 Pfarrkirchen  
08561-96333

### OPHTHALMOLOGISTS

Dr. med. Clemens Paul  
Ringstr. 14  
84347 Pfarrkirchen  
08561-6091

### OTOLARYNGOLOGISTS

Dr. med. Stefan Achhammer  
Rottpark 22  
84347 Pfarrkirchen  
08561-984830

### UROLOGISTS

Dr. med. Thomas Pimmer  
Rottpark 24  
84347 Pfarrkirchen  
08561-8500

### GYNAECOLOGISTS

Dr. med. Alexander Popp  
Rottpark 22  
84347 Pfarrkirchen  
08561-910315

Dr. med. Raimund Schwarz  
Rottpark 22  
84347 Pfarrkirchen  
08561-6264

Bettina Stoecker  
Stadtplatz 19-21  
84347 Pfarrkirchen  
08561-911011

Dr. med. Claudia Hesse  
Rottpark 22  
84347 Pfarrkirchen  
08561-6264

Dr. med. Ella Roth  
Wittelsbacherstraße 29  
84347 Pfarrkirchen  
08561-3930



## DENTISTS

Dr. Bastian Ach  
Eggenfeldener Str. 26  
84347 Pfarrkirchen  
08561-9896393

Dr. med. dent.  
Christoph Schmid  
Ringstr. 10  
84347 Pfarrkirchen  
08561-910444

Johannes and Claudia Bauriedl  
Rottpark 22  
84347 Pfarrkirchen  
08561-910234

Thomas Fröbel and  
Dr. Inge Altmannsberger  
Ringstraße 10  
84347 Pfarrkirchen  
08561-1229

Dr. Karl-Heinz Galster  
Arnstorfer Str. 12  
84347 Eggenfelden  
08561-1434

## DERMATOLOGISTS

Dr. med. Eva Sollich  
Lindnerstr. 15  
84347 Pfarrkirchen  
08561-2625

## PHARMACIES

Stadtapotheke  
Stadtplatz 33  
84347 Pfarrkirchen  
08561-1420

Apotheke im Turm  
Rottpark 22  
84347 Pfarrkirchen -  
Mooshof  
08561-23660

Rathaus-Apotheke  
Stadtplatz 3  
84347 Pfarrkirchen  
08561-8252

Alpha Apotheke  
Max-Lanz-Straße 1  
84347 Pfarrkirchen  
08561-9884377

## FIND MORE SPECIALISTS

[https://pfarrkirchen.de/  
leben-wohnen/  
gesundheitswesen.html](https://pfarrkirchen.de/leben-wohnen/gesundheitswesen.html)

## EMERGENCY NUMBERS

Police: 110

Fire brigade & ambulance: 112

If you need urgent medical treatment, go to "Notaufnahme" (Accident and Emergency) in the nearest hospital or call a "Notarzt" (emergency doctor).

110 112

# PFARRKIRCHEN MUNICIPALITY



### Town Hall I

City Office  
Stadtplatz 2  
84347 Pfarrkirchen



### Town Hall II

City Office  
Ringstraße 29  
84347 Pfarrkirchen



### Old Town Hall

Tourist Information  
Stadtplatz 1  
84347 Pfarrkirchen

## OPENING HOURS

### Town Hall I, Town Hall II and People's Education

Mo - Th | 9am - 12 & 2 - 4pm  
Fr | 8am - 12

### City Office in the Town Hall II

Mo - Th | 7.30am - 5pm  
Fr | 7.30am - 12

### Tourist Information in the Old Town Hall

Mo - Fr | 9am - 5pm  
Sa | 9am - 12 noon

### Public library in the Hans-Reiffenstuel-Haus (HRH)

Mo - Fr | 2 - 5pm  
Th | 11am - 1.30pm (only on school days) | 2 - 7pm  
First Sunday of the month | 10am - 12 noon

Updates on opening hours: <https://pfarrkirchen.de/buergerservice.html>

## CONTACT

### Stadtverwaltung Pfarrkirchen

Stadtplatz 2  
84347 Pfarrkirchen  
08561 3060  
info@pfarrkirchen.de





# JOIN

# EHRENAMT

Werde Teil einer  
starken Gemeinschaft!

Become a part of  
a strong community!

كن جزءاً من  
المجتمع القوي!



[www.join-ehrenamt.de](http://www.join-ehrenamt.de)

#### Vorteile einer ehrenamtlichen Tätigkeit:

- + Menschen kennenlernen
- + Sprachkenntnisse vertiefen
- + Aussicht auf bezahlte Arbeit erhöhen
- + Spaß in einer Gemeinschaft.

#### Benefits of volunteering:

- + get to know people
- + improve language skills
- + improve chances for a paid job
- + have fun in the community

#### فوائد التطوع

- التعرف على الناس
- تحسين مهارات اللغة
- المساهمة بمهاراتك الخاصة
- استمتع في المجتمع

Die Grundsätze des Roten Kreuzes  
The Fundamental Principles of the Red Cross  
المبادئ الأساسية للصليب الأحمر



Menschlichkeit  
Humanity  
الإنسانية



Unparteilichkeit  
Impartiality  
عدم التحيز



Neutralität  
Neutrality  
الحياد



Unabhängigkeit  
Independence  
الاستقلال



Freiwilligkeit  
Voluntary Service  
الخدمة التطوعية



Einheit  
Unity  
الوحدة



Universalität  
Universality  
العالمية



Bayerisches Rotes Kreuz  
Landesgeschäftsstelle  
Garmischer Straße 19-21  
81373 München

Join-ehrenamt@brk.de  
Telefon +49 89 92410  
[www.join-ehrenamt.de](http://www.join-ehrenamt.de)  
[www.brk.de](http://www.brk.de)



Bayerisches  
Rotes  
Kreuz

# AWAKEN YOUR INNER ENTREPRENEUR!

The Startup Campus at the Deggendorf Institute of Technology (DIT) supports students, alumni and employees in finding ideas, financing and implementing their innovative business concepts.

 **Startup Lab**  
ITC2 | D2 | 2nd Floor  
 [startupcampus@th-deg.de](mailto:startupcampus@th-deg.de)





# IMPRINT

## PUBLISHER

Technische Hochschule Deggendorf  
in co-operation with the Studentischer Konvent  
(Student Representatives)

## DESIGN AND LAYOUT

Emma J. Lunt, DIT marketing department

## PHOTO CREDITS

DIT marketing department, Fotolia, Adobe Stock,  
Stadt Pfarrkirchen

## PUBLICATION DATE

September 2021

## CONTACT

Deggendorf Institute of Technology  
Dieter-Görlitz-Platz 1  
94469 Deggendorf  
Germany  
0991 3615 - 0  
[www.th-deg.de/en](http://www.th-deg.de/en)





# KICK-START YOUR CAREER!

AT DIT FURTHER EDUCATION CENTRE

Combine your career with part-time  
postgraduate Master | MBA studies  
taught in German.



Weekend & evening  
lectures



Blend work  
& part-time study



Launch your career  
& get ahead of your peers